



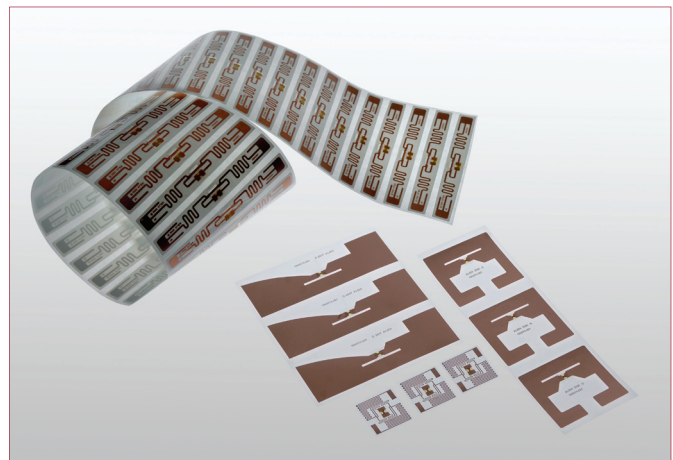
Alien® Family of EPC Gen 2 RFID Inlays

Alien Technology® manufactures a range of EPC Class 1 Generation 2 inlays and labels that are designed to deliver optimal performance in a variety of applications.

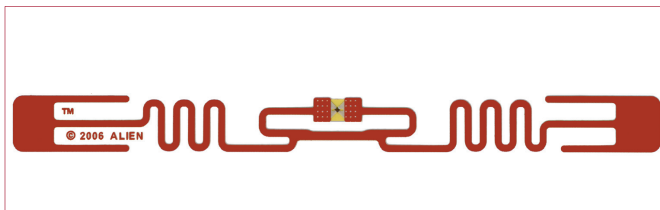
The Squiggle® (ALN-9540) is the most versatile member of Alien's family, delivering industry leading range, reliability and price for a broad range of traditional pallet and case uses as well as innovative new RFID applications. The 2x2 inlay (ALN-9534) is a compact inlay that offers exceptional omni-directional performance and is well suited for tagging apparel and baggage. The M inlay (ALN-9554) provides a high-performance solution for tagging plastics such as tote bins and pallets. The newest member of the Alien family, the diminutive Squiggle-SQ inlay (ALN-9529), delivers outstanding range in the item-tagging arena despite being the size of postage stamp.

All inlays are based on Alien's break through Alien H2 UHF RFID IC, which delivers superior sensitivity and range at the lowest per die cost in the industry. All members of the family are manufactured using Alien's patented Fluidic Self Assembly (FSA™) process, which delivers high inlay volumes at low unit costs.

Alien inlays are designed as World Tags, delivering uniform operation globally within a +/- 1.5 db band from 806 to 960 MHz. This enables the same inlay to be used successfully at the diverse frequencies of the Americas, Europe, Asia, and Africa. Alien World Tags allow companies to manufacture products on one continent and ship the worldwide utilizing a single RFID inlay type – with the inlay exhibiting uniform behavior and consistent performance globally.

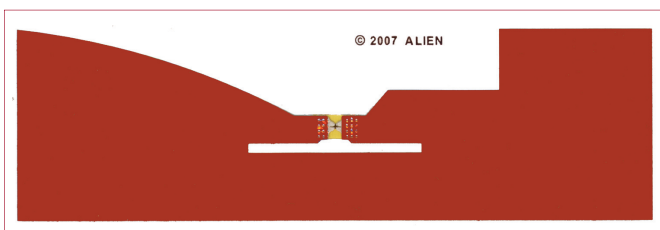


Inlay Product Portfolio



Squiggle Inlay

- › World Tag: global operation 860 to 960 MHz
- › The EPC Class 1 Gen 2 price/performance benchmark
- › High-performance solution for most packaging including products containing metal and water
- › 97mm x 11mm

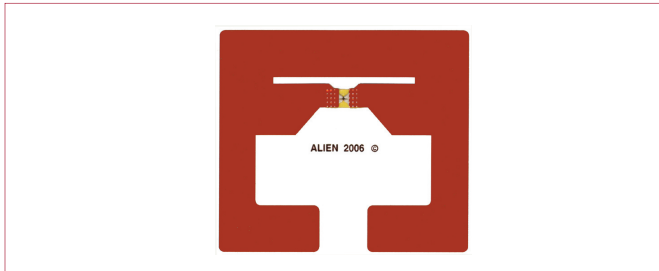


M Inlay

- › Global operation 860 to 960 MHz
- › High gain, high-performance inlay
- › Ideal for plastic totes, pallets & reusable assets
- › 94mm x 42mm

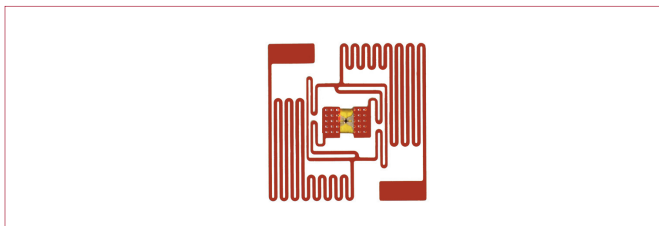


Alien Family of EPC Gen 2 RFID Inlays



2x2 Inlay

- › Global operation 860 to 960 MHz
- › Omni-directional inlay designed for applications such as airline baggage and apparel
- › Square design enables cost effective conversion for vertical labels
- › 47mm x 42mm



Squiggle-SQ Inlay

- › Optimized for operation from 902 to 928 MHz
- › Ideal for item level tagging
- › Near-field and far-field communication modes
- › 23mm x 23mm

Environmental Specifications

Operational Temperature Range	-25° C to +65° C
Shelf Life	2 years
Recommended Storage Conditions	-25° C to +50° C 20% to 90% RH, Non-Condensing
Drop Resistance	Per ASTM D5276
RoHs	2002/95/EC Compliant
ESD	Human Body Model – 1.5 KV Minimum Charged Device Mode – 1.5 KV Minimum

RF Protocol

ISO/IEC 18000-6C	
EPC Class 1 Gen 2	
EPC Memory Size	96 Bits
Access Control	32 Bits
Kill Code	32 Bits
Programming Cycles	10,000 Write Cycles

Product Specifications

Operating Frequency	860-960 MHz for operation in the Americas, Asia, Europe and Africa
---------------------	--

Copyright © 2007 Alien Technology Corporation. All rights reserved. Alien, Alien Technology, the Alien Technology logo, FSA™, Alien H2, Squiggle, and the Squiggle logo are trademarks or registered trademarks of Alien Technology Corporation in the U.S. and other countries. Other trademarks are the property of their respective owners.

